

MECHANICAL PROGRAM TIMER



- For real time load switching up to 16 A / 250 V
- Daily program
- Switching time setting: by plastic plates along the perimeter of the dial
- Shortest switching interval: 30 min
- Change-over switch: permanent operation/automatic run
- Run time: 150 h

Mechanical program timer

Contact sequence ¹⁾	Type	Product code	Weight [kg]	Packing [pcs]
001	talento 211	11150	0.14	1

¹⁾ Each digit indicates successively the number of make and break contacts

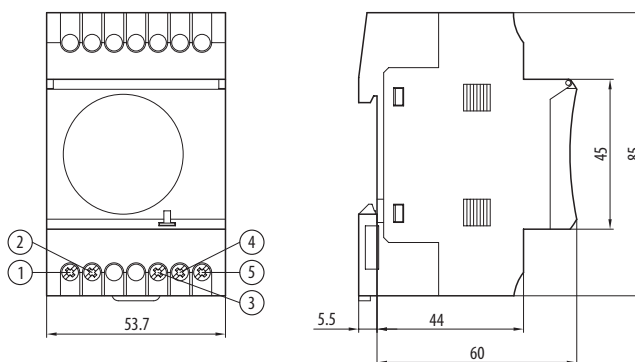
Specification

Type	talento 211	
Main circuit (contact)		
Sequence ¹⁾		001
Switched AC power	resistance load	16 A / 250 V a.c.
	inductive load cosφ=0.6	4 A / 250 V a.c.
	lamp load	1350 W
Time circuit		
Min. switching interval		30 min
Program		daily
Accuracy		± 2.5 s/day at 20 °C
Run time		150 h
Time display		plastic pointer
Supply circuit		
Rated operating voltage	U _e	230 V a.c., 130 V d.c.
Power input at 230 V a.c.		1 VA
Charging time		70 h
Other data		
Manual change-over switch: permanent/automatic operation		yes
Mounting on the rail DIN EN 50 022-width		35 mm
Degree of protection		IP20
Possibility of sealing		yes
Ambient temperature		-20 ÷ 55 °C

¹⁾ Each digit indicates successively the number of make and break contacts

Dimensions

talento 211



Diagram

talento 211

