

SURGE VOLTAGE ARRESTERS – TYPE 2

T2



Surge voltage arresters SVC in fixed design (single-pole)

- Surge voltage arresters designed for building, residential, commercial and similar installations classed in group „low installation threat“.
- For four-wire TN-C network use 3 pcs SVC-275-1(S) and for five-wire TN-S, TT network use the combination 3 pcs SVC-275-1(S) + 1 pc SVC-255-N-S.
- Main component is varistor, able to arrest lightning current up to 40 kA (8/20 μ s).
- Possibility of mounting in casual distribution board and switchboard cabinets Distri.
- Remote and visual signalling of the shut-down device state (after disconnection the surge voltage arrester is non-functional and it must be replaced).
- Remote signalling of state is provided in type SVC-275-1-S.
- Possibility of easy interconnection with circuit breakers LPE, LPN by means of interconnecting busbar.

Connection between	Design	Type	Product code	Number of modules	Weight [kg]	Package [pcs]
L-PEN, L-PE, L-N	without remote signalling	SVC-275-1	OEZ:38842	1	0.095	1
	with remote signalling	SVC-275-1-S	OEZ:38843	1	0.100	1

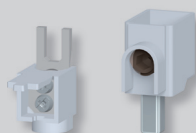
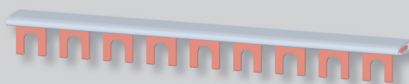
Summing spark gap SVC-255-N-S (single-pole)

- Surge voltage arrester designed especially for connection 3+1 or 1+1.
- Use as a summary spark gap between N and PE in TN-S or TT network (connection „3 + 1“ or „1 + 1“).
- Main component is a power arrester, able to arrest lightning current up to 50 kA (8/20 μ s).
- Possibility of mounting in casual distribution board and switchboard cabinets Distri.
- Remote and visual signalling of the shut-down device state (after disconnection the lightning current arrester is non-functional and it must be replaced).
- Possibility of easy interconnection with circuit breakers LPE, LPN by means of interconnecting busbar.

Connection between	Design	Type	Product code	Number of modules	Weight [kg]	Package [pcs]
N-PE	with remote signalling	SVC-255-N-S	OEZ:38844	1	0.100	1

Accessories





Interconnecting busbars	G1L, G2L, G3L, G4L, S1L, S2L, S3L, S4L
Terminal extensions	AS-25-G, AS-50-S-AL01



SURGE VOLTAGE ARRESTERS – TYPE 2

T2

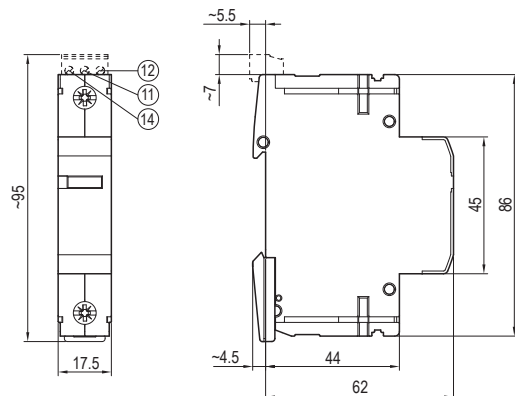
Specifications

Type			SVC-275-1 SVC-275-1-S	SVC-255-N-S
Standards			EN 61643-11 IEC 61643-11	EN 61643-11 IEC 61643-11
Approval marks				
Rated voltage	U_N		AC 230 V	AC 230 V
Max. constant operating voltage	U_c	L-N	AC 275 V / DC 350 V	-
		L-PE / L-PEN	- / AC 275 V / DC 350 V	- / -
		N-PE	-	AC 264 V
Rated discharge current (8/20 μ s)	I_n	L-N	20 kA	-
		L-PE / L-PEN	- / 20 kA	- / -
		N-PE	-	30 kA
Max. discharge current (8/20 μ s)	I_{max}	L-N	40 kA	-
		L-PE / L-PEN	- / 40 kA	- / -
		N-PE	-	50 kA
Rated frequency	f_n		50/60 Hz	50/60 Hz
Voltage protection level	U_p	L-N	≤ 1.35 kV	-
		L-PE / L-PEN	- / ≤ 1.35 kV	- / -
		N-PE	-	≤ 1.3 kV
Arrester classification		according to EN 61643-11	type 2 	type 2 
		according to IEC 61643-11	class II	class II
Response time		L-N	≤ 25 ns	-
		L-PE / L-PEN	- / ≤ 25 ns	- / -
		N-PE	-	≤ 100 ns
Max. backup fuse gG/gL			125 A	-
Degree of protection			IP20	IP20
Mounting on “U” rail according to EN 60715 – type			TH 35	TH 35
Connection				
Conductor – rigid (solid, stranded)			0.5 ÷ 25 mm ²	0.5 ÷ 25 mm ²
Conductor – flexible			0.5 ÷ 16 mm ²	0.5 ÷ 16 mm ²
Torque			2 Nm	2 Nm
Top or bottom connection			top/bottom	top/bottom
Optical signalling				
Functional state			green	green
Non-functional state			red	red
Remote signalling				
Arrangement of contacts ¹⁾			001	001
Max. voltage/current	U_{max}/I_{max}		AC 250 V / 1 A	AC 250 V / 1 A
			DC 125 V / 0.2 A	DC 125 V / 0.2 A
Min. switched power			0.12 VA (12 V, 10 mA)	0.12 VA (12 V, 10 mA)
Connection – conductor (rigid, flexible)			0.14 ÷ 1.5 mm ²	0.14 ÷ 1.5 mm ²
Torque			0.25 Nm	0.25 Nm
Operating conditions				
Ambient temperature			-25 ÷ 45 °C	-25 ÷ 45 °C
Working position			arbitrary	arbitrary

¹⁾ Each digit indicates successively the number of make, break and break-make contacts

Dimensions

SVC-275-1
SVC-275-1-S
SVC-255-N-S



Diagram

