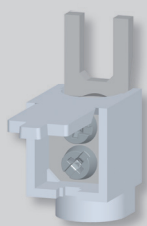


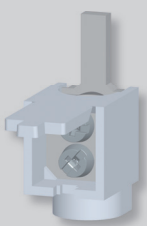
TERMINAL EXTENSIONS



Terminal extension up to 25 mm² with fork

- For connection of another conductor to the head part of the terminal of a circuit breaker, residual current circuit breaker, tumbler power switch etc.
- For example, the best solution is to connect a conductor for power supply of an electric meter in the clamp part of the circuit breaker terminal, and another conductor through the connecting adapter AS-25-G in the head part of the circuit breaker terminal.
- Conductor cross-section: 6 ÷ 25 mm².

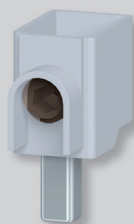
Type	Product code	Accessories to	Weight [kg]	Package [pcs]
AS-25-G	37390	LPE, LPN, OFE, OFI, SJB, SJBC, SVBC, SVC, SVM, APN	0.013	30



Terminal extension up to 25 mm² with pin

- For connection of conductors to the clamp part of the terminal.
- Conductor cross-section: 6 ÷ 25 mm².

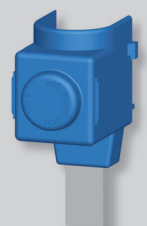
Type	Product code	Accessories to	Weight [kg]	Package [pcs]
AS-25-S	37389	OFI-...-2-..., OFE-...-2-..., RLP	0.014	30



Terminal extension up to 50 mm²

- For connection of Al or Cu conductors.
- Cross-section of Cu conductors: 2.5 ÷ 50 mm².
- Cross-section of Al conductors: 2.5 ÷ 50 mm².

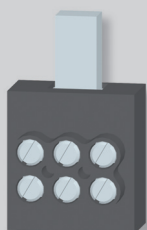
Type	Product code	Accessories to	Weight [kg]	Package [pcs]
AS-50-S-AL01	38749	LPE, LPN, LST, OLE, OLI, OFE, OFI, SJB, SJBC, SVBC, SVC, SVM, APN, AST	0.018	1



Terminal extensions up to 95 mm²

- For connection of Cu/Al conductors of cross section 35 ÷ 95 mm².
- With direct or outbowed terminal.

Type	Product code	Accessories to	Weight [kg]	Package [pcs]	
CS-FH000-3NP95	13740	straight terminal – the package contains the set of 3 pieces	LST, SJBplus, SJB-NPE, AST	0.176	1
CS-FH000-1NP95	14378	straight terminal	LST, SJBplus, SJB-NPE, AST	0.06	1
CS-FH000-3NV95	13742	outbowed terminal – the package contains the set of 3 pieces	LST, SJBplus, SJB-NPE, AST	0.184	1



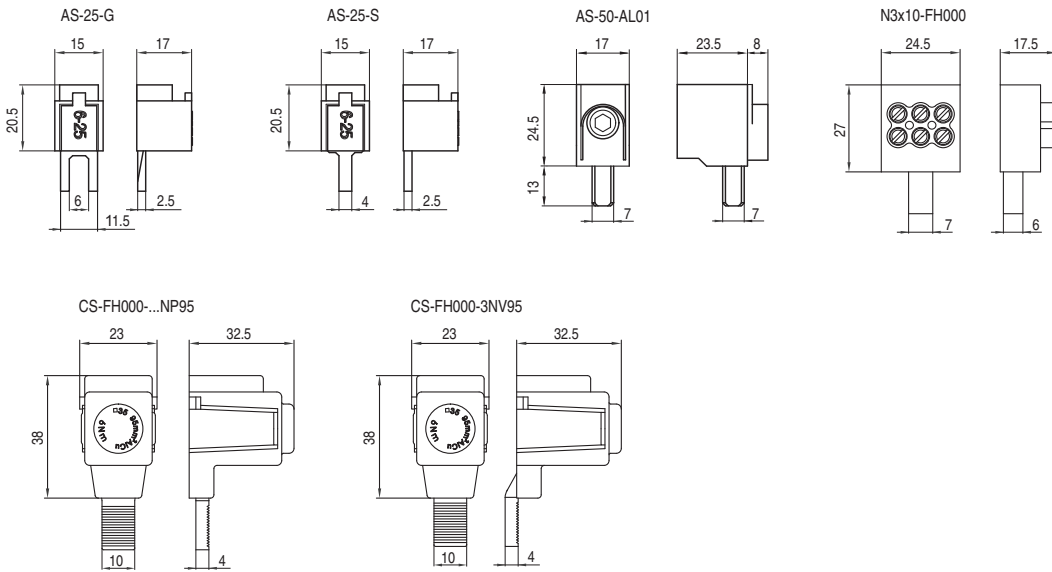
Terminal extension 3x10 mm²

- For connection of 3 conductors/device pole of cross section 10 mm².

Type	Product code	Accessories to	Weight [kg]	Package [pcs]
N3x10-FH000	14127	LST, OLE, OLI, SJB, SJBC, SVBC, SVM, AST	0.035	1

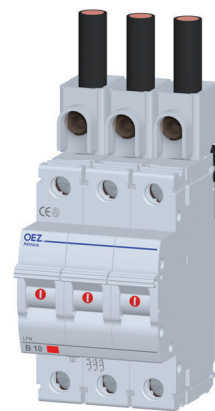
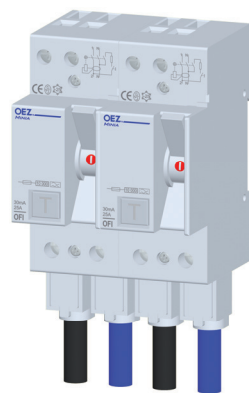
TERMINAL EXTENSIONS

Dimensions



Examples of use of connecting adapters and blocks

- AS-25-G**
For connection of another conductor of cross section up to 25 mm² to the head part of the terminal.
Use: LPE, LPN, OFE, OFI, SJB, SJBC, SVBC, SVC, SVM, APN.
- AS-25-S**
For connection of conductors of cross section up to 25 mm² to the clamp part of the terminal.
Use: OFI-...-2-..., OFE-...-2-..., RLP.
- AS-50-S-AL01**
For connection of Cu/Al conductors of cross section up to 50 mm² to the clamp part of the terminal.
Use: LPE, LPN, LST, OLE, OLI, OFE, OFI, SJB, SJBC, SVBC, SVC, SVM, APN, AST.



CS-FH000-3NP95, CS-FH000-1NP95, CS-FH000-3NV95

For connection of Cu/Al conductors of cross section up to 95 mm² to the clamp part of the terminal.
Use: LST, SJBplus, SJB-NPE, AST.

N3x10-FH000

For connection of three conductors of cross section 10 mm² to the clamp part of one terminal.
Use: LST, OLE, OLI, SJB, SJBC, SVBC, SVM, AST.

