

SUMMARY OF MODELS OF FUSE-RAILS

				
Type	FSR00	FSR1	FSR2	FSR3
Rated operating current I_e	160 A	250 A	400 A	630 A
Rated operating voltage AC/DC U_e	690 V	690 V	690 V	690 V
Size	00	1	2	3
Busbar spacing	185 mm	185 mm	185 mm	185 mm
Mounting width	50 mm	100 mm	100 mm	100 mm
Fuse-link size	000/00	1	2	3

Accessories

Connecting sets		CS-FS00-3..	CS-FS123-WD		
Adapter for busbar system with spacing 185 mm		OD-FS00-DA	-	-	-
Connecting space covers		OD-FS00-..	OD-FS123-KP		
Fuse cover		OD-FSR00-K	-	-	-
Switch-disconnector superstructures		-	NL-FSD12-3.		NL-FSD3-3.
Adapter for parallel outlet		-	HP-SE/K		
Measuring transformers		FSR00-3D-...-M.	MA1.-FS123-..		

SUMMARY OF MODELS OF FUSE-RAILS

Description

Connecting hooks

- Busbar thickness $5 \div 12$ mm.
- Busbar width $12 \div 32$ mm.



Adapter for busbar system with spacing 185 mm

- Enables compensation of mounting depth in combination with FSR1, FSR2, FSR3. FSR1, FSR2, FSR3.



Adapter for parallel outlet

- Enable temporary connection of another outlet.



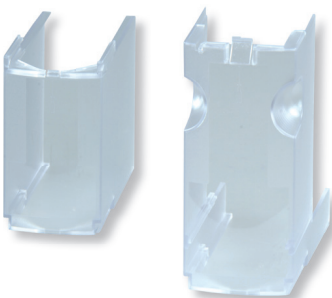
Switch-disconnector superstructures

- Enable to rebuild of the fuse-rail into a fuse switch-disconnector.



Connecting space covers

- Additional covering of outlet connecting space.



Fuse cover

- It makes it possible to cover the fuse-link.



Measuring adapters

- Transformation ratio 250/5 A, 400/5 A and 600/5 A.
- Class of accuracy 0,5; 0,5S and 1.
- Overcurrent number 5.

Connecting sets

- Accessory for switch-disconnector FSD00.
- Accessory for switch-disconnector FSD1, 2, 3.
- For connection of Cu/Al conductor of cross-section up to 95 mm^2 .
- For connection of Cu/Al conductor of cross-section $2 \times 240 \text{ mm}^2$.



FUSE-RAILS FSR00



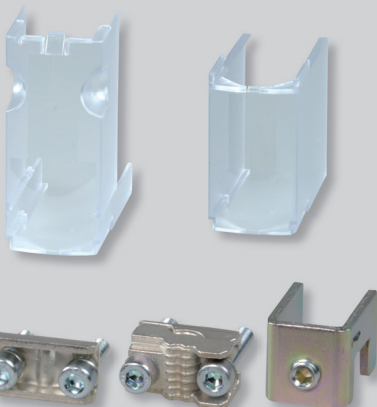
- The fuse-rails are suitable for application in disconnecting cabinets or distribution and industrial low-voltage switchboards with busbar spacing .
- They are intended for fuse-links with blade contacts size 000 and 00.
- Modular design.
- Cable outlet bottom or top.
- Mounting directly on the busbar by means of screws M8/10 Nm.
- Connecting sets for Cu/Al up to 95 mm².
- Design:
 - ...-FC with built-in connecting space cover.
 - Design with built-in measuring current transformers:
 - ...-RM1 transformation ratio 100/5 A, power output 2.5 VA, class of accuracy 1.
 - ...-M1 transformation ratio 200/5 A, power output 3.75 VA, class of accuracy 1.
 - ...-M05 transformation ratio 200/5 A, power output 3.75 VA, class of accuracy 0.5.
 - ...-M05C with calibrated measuring transformer, transformation ratio 200/5 A, power output 3.75 VA, class of accuracy 0.5.

Fuse-rails


I _n [A]	Type	Order code	Weight [kg]	Package [pcs]
160	FSR00-3D-F	OEZ:43466	1.360	1
	FSR00-3D-FC	OEZ:43467	1.360	1
	FSR00-3D-FC-RM1	OEZ:43468	1.840	1
	FSR00-3D-FC-M1	OEZ:43470	1.840	1
	FSR00-3D-FC-M05	OEZ:43469	1.840	1
	FSR00-3D-FC-M05C	OEZ:43471	1.840	1

Accessories

Connecting sets	CS-FS00-..	page D25
Connecting hooks	CS-FS00-3H	page D25
Adapters for busbar systems	OD-FS00-DA	page D25
Connecting space cover	OD-FS00-KPD	page D25
Extension cover	OD-FS00-DK	page D25
Fuse cover	OD-FSR00-K	page D25



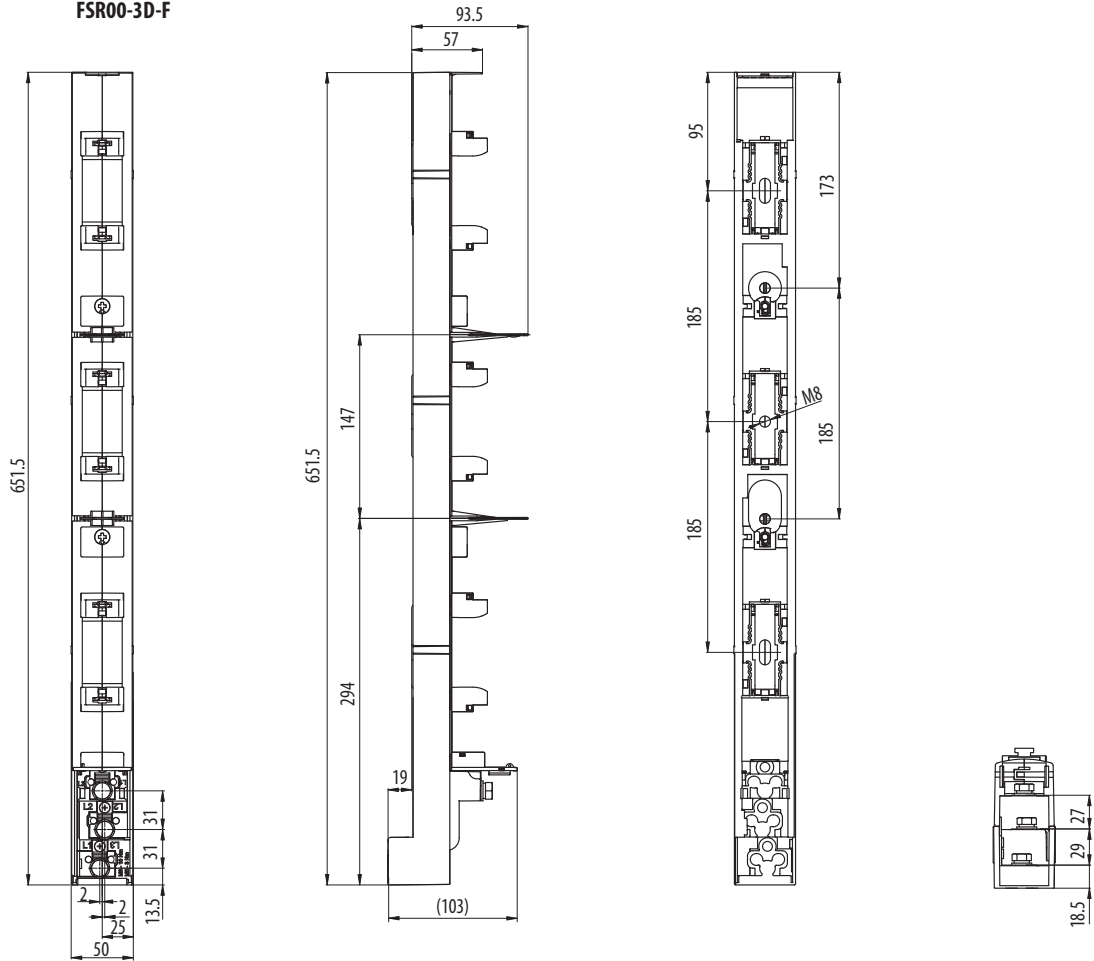
FUSE-RAILS FSR00**Specifications**

Type	FSR00	
Standards	IEC 60269-1 IEC 60269-2	
Approval marks		
Rated current	I_n	160 A
Rated voltage	U_n	AC/DC 690 V
Rated thermal current with fuse-link	I_{th}	160 A
Rated thermal current with disconnecting link ZP000	I_{th}	240 A
Rated frequency	f_n	40 ÷ 60 Hz
Rated insulation voltage	U_i	AC 1 000 V
Short-circuit resistance with fuse-link gG, AC 400 V	160 A / 120 kA	
Fuse-link size	000 (00C), 00	
Max. power losses of the fuse-link	P_v	12 W
Connection		
Connecting screws / cable lugs / busbars	M8 / max. \varnothing 25 mm / max. width 25 mm	
Torque	10 Nm	
Operating conditions		
Degree of protection	IP20	
Operating ambient temperature	-25 ÷ +55 °C	
Working position	see page I3	

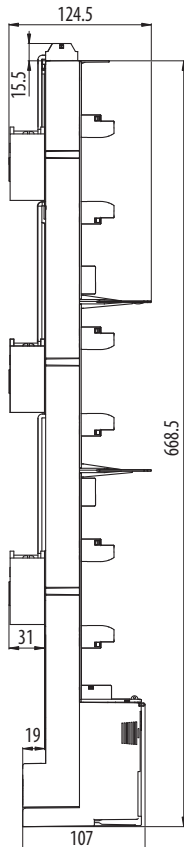
FUSE-RAILS FSR00

Dimensions

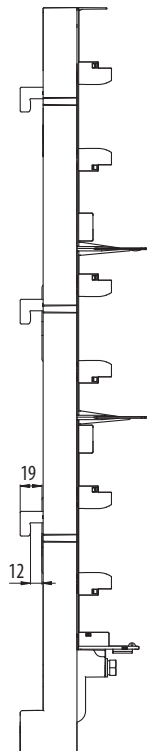
FSR00-3D-F



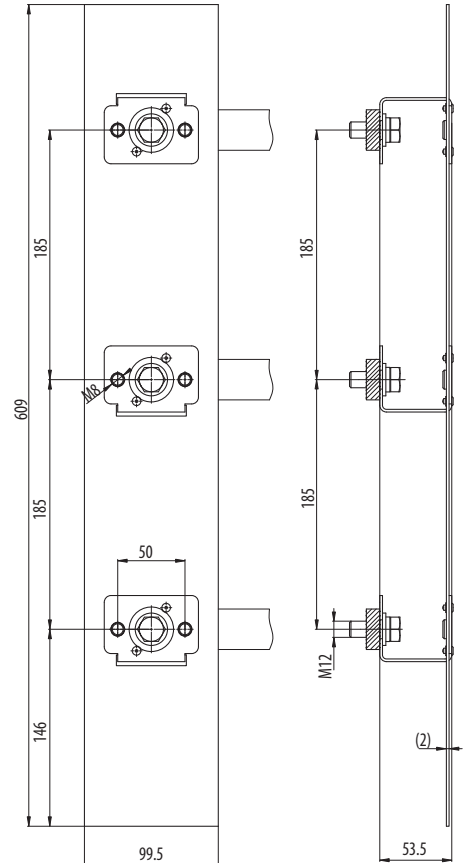
FSR00-3D-FC-M...



FSR00-3D-F + CS-FS00-3H



OD-FS00-DA



ACCESSORIES FOR FSR00

**Connecting set up to 70 mm²**

- Cross-section of Cu conductor 2.5 ÷ 70 mm².
- Torque 3 Nm.

Type	Order code	Description	Weight [kg]	Package [pcs]
CS-FS00-3S	OEZ:43425	clip terminal, 3 pcs	0.053	1

**Connecting set up to 95 mm²**

- Cross-section of Cu/Al conductor 10 ÷ 95 mm².
- Torque 3 Nm.

Type	Order code	Description	Weight [kg]	Package [pcs]
CS-FS00-3P1	OEZ:43423	prismatic clamp, 3 pcs	0.110	1

**Connecting hooks**

- Busbar thickness 5 ÷ 12 mm.
- Busbar width 12 ÷ 32 mm.
- Torque 5 Nm.

Type	Order code	Description	Weight [kg]	Package [pcs]
CS-FS00-3H	OEZ:43421	package contains set of 3 pcs	0.102	1

**Adapter for busbar system**

- Busbar spacing 185 mm.
- For connection of two fuse-rails.
- Enables compensation of mounting depth in combination with FSR1, FSR2, FSR3.

Type	Order code	Description	Weight [kg]	Package [pcs]
CS-FS00-DA	OEZ:43428	for FSR00-3D-..	0.730	1

Technical information see page D24

**Connecting space cover**

- Additional covering of outlet connecting space.

Type	Order code	Description	Weight [kg]	Package [pcs]
OD-FS00-KPD	OEZ:43426	for FSR00-3D-..	0.077	1

**Extension cover**

- It extends the cover of the connecting space by 80 mm.
- It is possible to connect more extension covers in series.

Type	Order code	Description	Weight [kg]	Package [pcs]
OD-FS00-DK	OEZ:43427	cover is applied OD-FS00-KPD	0.079	1

**Fuse cover**

- It makes it possible to cover the fuse-link of size 000 and 00.

Type	Order code	Description	Weight [kg]	Package [pcs]
OD-FSR00-K	OEZ:43430	package contains set of 3 pcs	0.056	1